

Tulare County Fire Department

Exeter Presentation 2025



Mission Statement

- ▶ The Tulare County Fire Department is committed to providing leadership, coordination and customer-based service through High Quality Fire Prevention, Responsive Suppression and Timely Emergency Medical Services.

Vision Statement

- ▶ We are committed to excellence through professionalism and trustworthiness achieved through our daily operations. We will continue to expand our public service delivery model through innovative and fiscally responsible practices. We will strive to offer our workforce the best opportunities available for training and education to further enhance the public service we provide to our citizens.

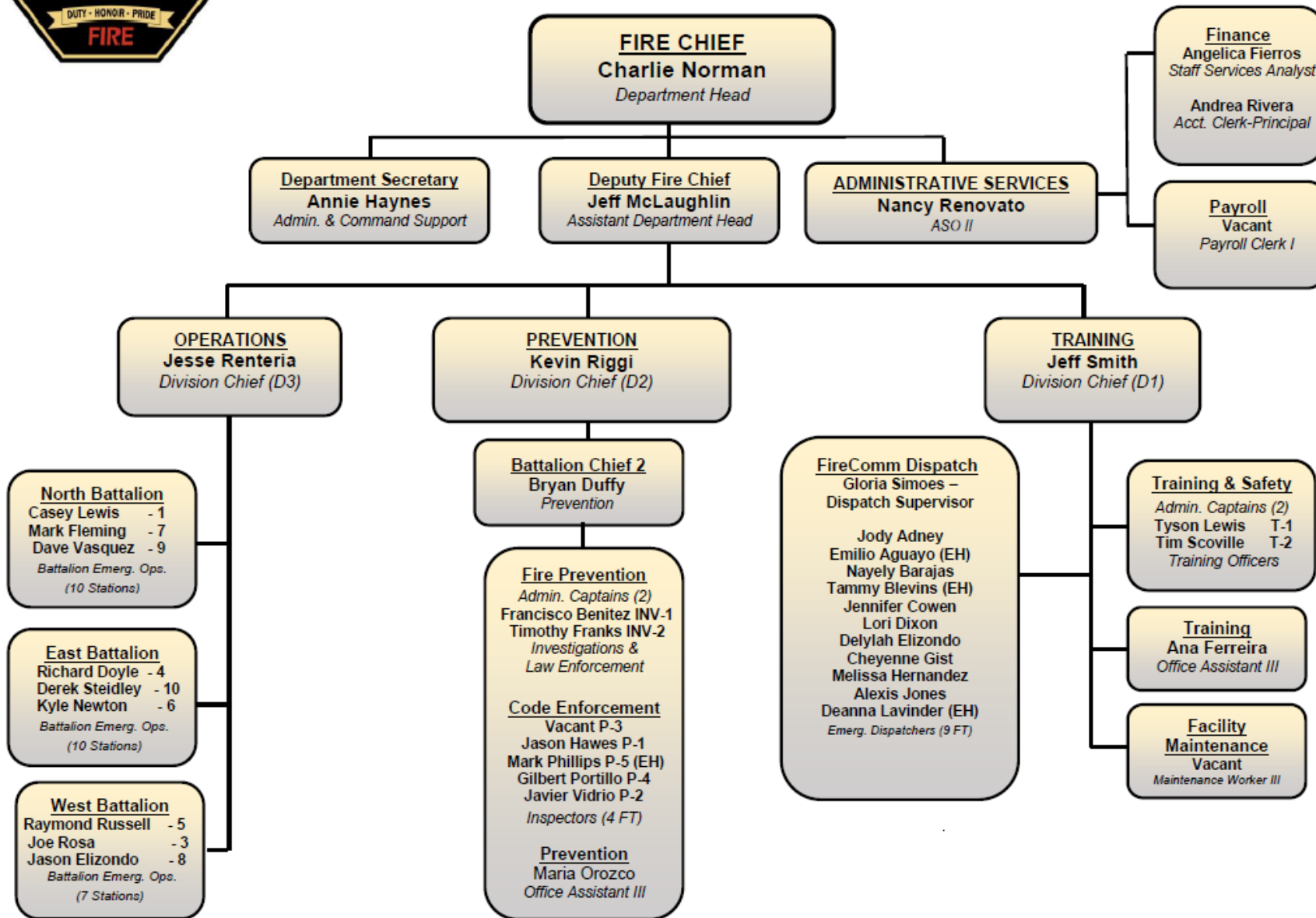
Core Values

- ▶ Integrity
- ▶ Respect
- ▶ Loyalty
- ▶ Teamwork
- ▶ Compassion



TULARE COUNTY FIRE DEPARTMENT

Program, Administrative and Command Organization



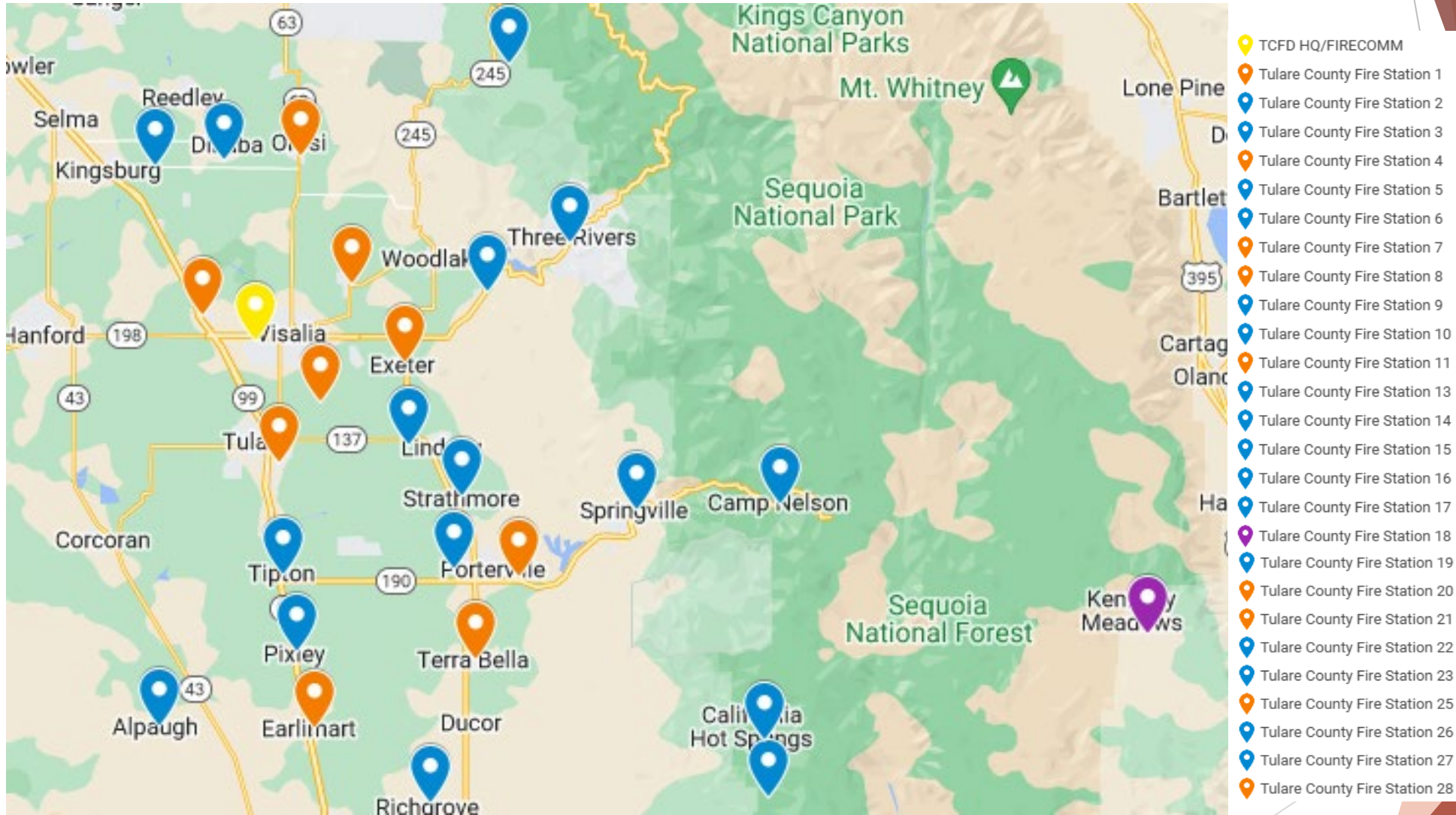


TCFD at a Glance

Current Staffing:

- ▶ 140 FT Personnel (135 filled positions, 6 vacant)
- ▶ 105 EH Volunteer Fire Personnel
 - ▶ 20 Fuels Crew (Extra Help Seasonal Firefighters)
- ▶ 26 Fire Stations (22 Valley, 4 Mountain)
- ▶ 52 Apparatus
- ▶ 16,140 calls for Service
- ▶ Dispatching 17,200 emergencies, receiving/handling 52,000 calls
- ▶ \$35.7 Million Budget
- ▶ All Risk/All Hazard Fire Department providing Fire Suppression, Prevention, Pre-Hospital Care, Rescue, Hazardous Materials Response, and Public Education Services

Map of Fire Stations



Orange =
2-0 Staffed
stations



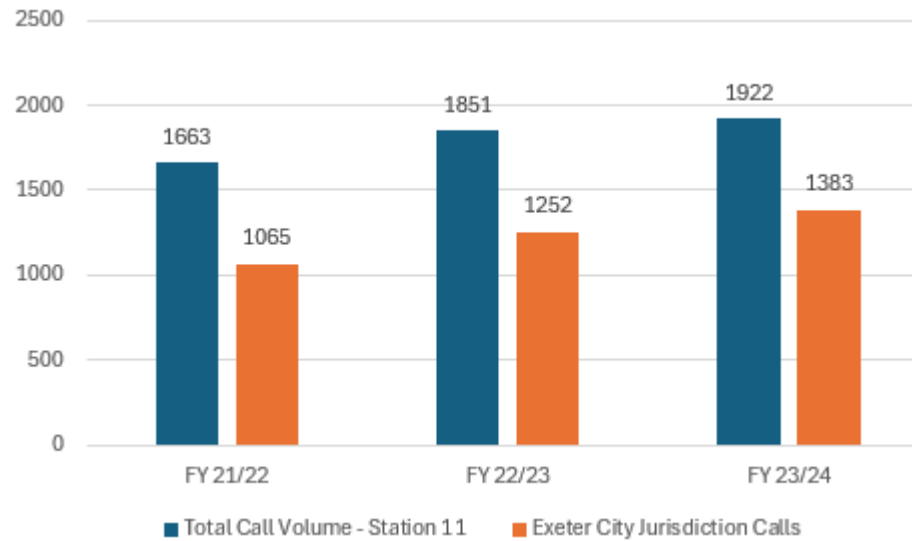
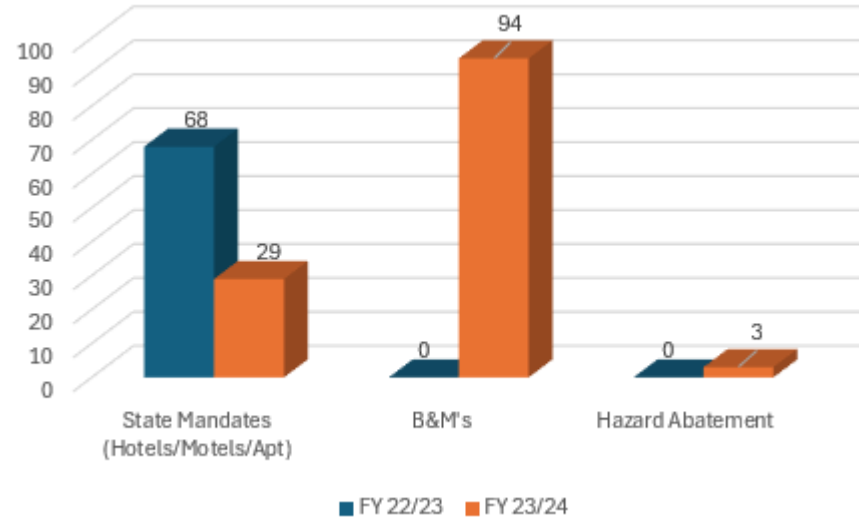
Exeter Operational Update

Tulare County Fire Department is an all-risk Fire Department that serves as the operational area coordinator for all fire department located within the county. Operationally we provide risk-based management and emergency services to 36 unincorporated communities and 1 contract City. In 2024 TCFD responded to over 16,140 class for service. Those calls included:

- ▶ Emergency Medical Services (EMS) - 1,356 (+6% from PY)
- ▶ Motor Vehicle Accidents - (-21% from PY)
- ▶ Building Fires - 11 (0% change from PY)
- ▶ Vegetation Fires - 32 (+24% from PY)
- ▶ Public Service Assist (PSA) - 7 (-117% from PY)

Exeter EMS
Calls make up
11.6% of all
department
EMS calls.

Exeter Operational Update cont.



FY 22/23 -
B&M's
suspended due
to COVID

**% of calls in city
jurisdiction:**

FY 21/22
64% of calls

FY 22/23
68% of calls

FY 23/24
72% of calls



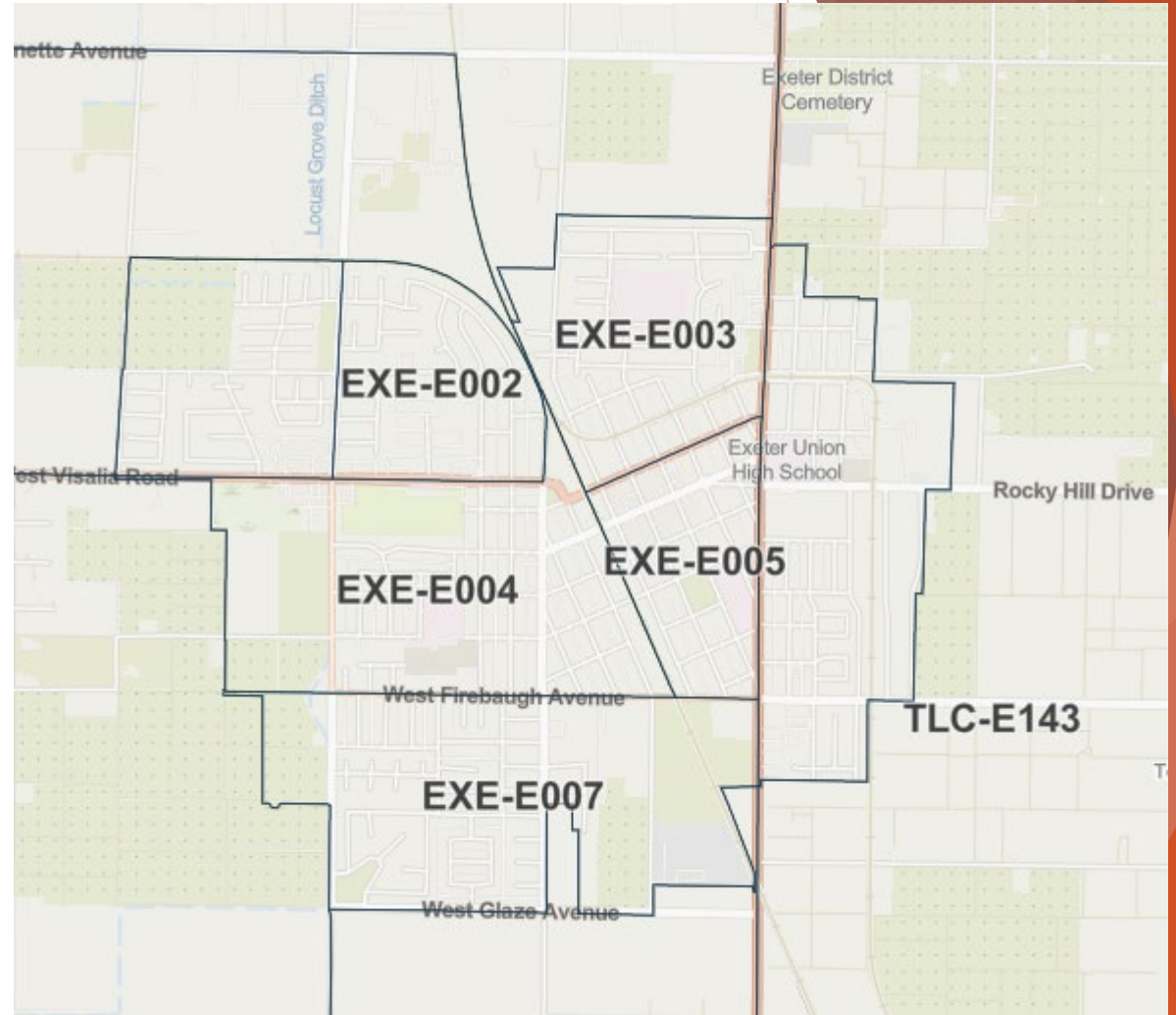
Operational Improvements

- ▶ Cloud Based 911
- ▶ Fuels Crew for wildfire mitigation
- ▶ Emergency Operations Center
- ▶ Cadet Program as recommended by Public Safety Task Force



Major Incident Readiness

- ▶ Genasys
- ▶ All Hazards Type III Team
- ▶ Mission Tasking Resources
- ▶ Starlink





Potential Southern CA Recent Fire Impacts

- ▶ Code Changes
- ▶ Response Changes
- ▶ State/Federal Mandates
- ▶ Master Mutual Aid Changes

